

# CEM 11 Injection Tube

Product Information Page

**CEM 11 Injection Tube System is a PVC based injection tube, which is installed in the construction joints of a concrete structure at the construction stage, this allows the joints to be injected with resins at a later stage if required.**

CEM 11 Injection Tube System consists of the following items:

- A single-wall, smooth, tube, with slightly cone shaped openings
- Plastic injection-port boxes
- Ventilation hose
- Injection port
- Injection nipple
- Hose cap
- Fixing Clips

#### Specification Tip for Design Professionals:

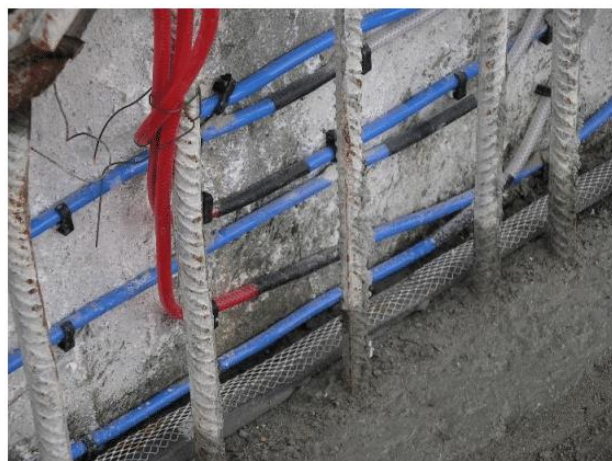
CEM 11 Injection Tube System may be specified by name or by using the following description: a single-wall, smooth, blue coloured tube, with slightly cone shaped openings.

#### How does CEM 11 Injection Tube System work:

The CEM 11 Injection Tube is installed in the construction joints of a concrete structure at the construction stage. This allows the joints to be injected with resins at a later stage if required.

The hose CEM 11 Injection Tube has 5mm openings spaced ever 12mm-14mm, this allows for easy injection of materials.

The injection material is pumped into the tube through the Injection Hoses that are in the Injection Port Boxes.



#### Fields of application:

- ✓ Suitable for use in both vertical and horizontal construction joints
- ✓ Manufacturing process to DIN ISO 9001
- ✓ Unique design prevents the fresh concrete paste from entering the system
- ✓ Suitable for above-ground and below-ground use
- ✓ Circular tube – no unwanted twisting
- ✓ Smooth surface on the tube to prevent bonding between the tube and the concrete
- ✓ Easy to install

**SURFASOLOGY**

**E: [info@surfalogy.com](mailto:info@surfalogy.com)**

**T: 01 832 1005**

**W: [surfalogy.ie](http://surfalogy.ie)**



### How do I prepare the surface before applying CEM 11 Injection Tube System:

- The surface onto which CEM 11 Injection Tube is to be placed should be clean and flat.
- The CEM 11 Injection Tube should be cut into lengths that are <10m.
- A suitable length of red coloured Injection Hose should be secured to one end of the CEM 11 Injection Tube, and a suitable length of clear Ventilation Hose should be secured to the other end of the CEM 11 Injection Tube.
- Both of these hoses should be of sufficient length, so that they will extend into Injection Port Boxes which will be located where they may be accessible in the future.
- A Yellow Hose Cap is fixed to the ends of the hoses, until such time as the Injection Pieces are to be installed and the injection of materials is to commence.
- The CEM 11 Injection Tube should be secured tightly into position using Fixing Clips placed at 15cm centres.

TECHNICAL DATA:	
Working material	PVC
Colour	Blue
Inner tube diameter	5mm
Outside diameter of the tube	11mm
Materials that may be injected	PU / EP Resins, Acrylates, Gels No-Cements
Maximum length for installing tube	10m * Please consult our Technical Department for advise.
Perforations/slots in inner hose	5mm perforations/slots every 12mm-14mm
Storage	Clean, dry and shaded from sunshine in temperatures >5°C
Shelf Life	5 years when stored correctly

**Please protect the environment: Dispose of waste in accordance with the local authority regulations.**

### Disclaimer:

The general information provided in the present technical description, application guidelines and other recommendations, is based on research and experience. However, the client is obliged to determine themselves what products are suitable for use. Accordingly, no liability will be accepted by IBC Limited t/a SURFASOLOGY™.

**For further information contact the SURFASOLOGY™ Technical Department.**

**SURFASOLOGY**

**E: [info@surfalogy.com](mailto:info@surfalogy.com)**

**T: 01 832 1005**

**W: [surfalogy.ie](http://surfalogy.ie)**



**SURFASOLOGY**



## Smart Surface Solutions

Waterproofing and Damp Proofing Specialists

## WHO WE ARE

**SURFASOLOGY**, formerly IBC Ltd., is Ireland's leading waterproofing and damp proofing specialist that has been proudly providing market leading, innovative, and sustainable construction solutions since 1976.

Our high-quality products and systems are accompanied by our professional technical support and a full installation service. **SURFASOLOGY** technical consultancy team have unrivalled experience in major construction projects, as well as solving everyday problems for homeowners, with long term trustworthy solutions.

Our products are all manufactured in ISO Quality System compliant facilities and meet the relevant local, National, & European standards. **SURFASOLOGY** network members manufacture products exclusively in Germany, Switzerland, Spain, Greece and the UK. We support these products in local markets with highly-qualified technical professionals, who understand both on-site demands and the design detail. We work in a collaborative way with our clients at all stages of the project to ensure that the correct design, preparation, and application are carried out to ensure a timely and successful outcome for all stakeholders.

**Get in touch with us today!**

**INNOVATIVE, WORLD-CLASS,  
SUSTAINABLE CONSTRUCTION  
SOLUTIONS, POWERED BY OUR  
EXTENSIVE EXPERIENCE AND  
EXPERTISE.**

## AREAS OF EXPERTISE

### Structural Waterproofing

Our world class solutions encompass the whole building envelope both above and below ground.

### Damp Proofing & Remedial

A comprehensive range of first class damp proofing and timber treatment solutions.

### Specialist Screeds & Coatings

High quality floor finish on domestic, commercial, under-floor heating or industrial projects.

### Concrete Repair

We offer a highly efficient selection of products for the repair and protection of concrete elements.

## WHAT WE DO

### Material Supply

Reliable and sustainable surface solutions accompanied by unrivalled technical support.

### Installation Service

Specialised installation service provided by our approved contractors delivering high quality workmanship you can trust.

### Technical Support

Extensive experience and expertise in Project Design and Technical Support Services ensuring reliable outcomes for all our clients.

### CPD Seminars

RIAI and RIBA approved CPD Seminars to specifiers on a variety of topics covering structural waterproofing and damp proofing.

**SURFASOLOGY**

Unit 143, Grange Drive,  
Baldoye Industrial Estate,  
Dublin 13, D13 W9V2,  
Ireland

**E:** [info@surfalogy.com](mailto:info@surfalogy.com)

**T:** 01 832 1005

**W:** [surfalogy.ie](http://surfalogy.ie)

