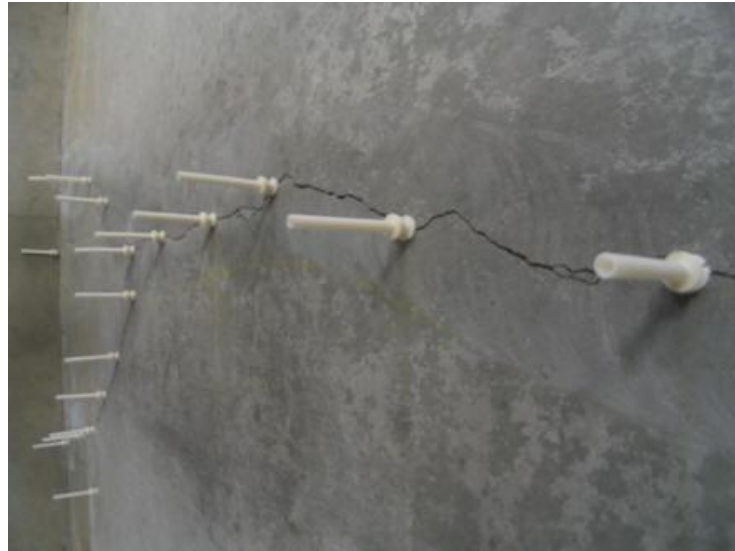


Basement Car Park Resin Injection

Dublin 14



Details

Type of Job	Resin Injection (as part of remedial works)
Products	PU Injection Foam Resin
Main Contractors	Sorohan Builders
Sub-Contractor	SURFASOLOGY
Location	Dublin
Construction Completion	2018

Description

SURFASOLOGY approved applicators, Hollywell Construction Ltd., completed the remedial works in the Basement Car-Park of this exclusive development using SURFASOLOGY flexible resin injection system.

The crack opening was closed using a fast-set mortar which is similar in colour to the concrete, a series of drill holes were drilled over the crack line, injection packers were placed into the clean drill holes, a special resin was injected under pressure through the packers which provided a water-tight seal.