



DualProof T Membrane

Product Information Page

DualProof T Membrane:

DualProof T Membrane is a pre-applied, composite waterproofing membrane which forms a permanent mechanical bond with the fresh concrete preventing the tracking of water between the waterproofing membrane and the concrete.

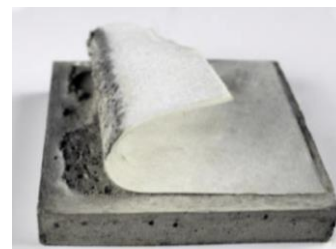
DualProof T Membrane consists of a special non-woven PP-Fleece, which is co-extruded with a flexible transparent PVC Membrane. The fresh concrete forms a mechanical bond with the PP-Fleece. The system is specifically designed for the waterproofing and protection of below ground reinforced concrete structures.

DualProof T Membrane is designed to perform for the lifetime of the structure provided it is not damaged by subsequent building operations.

Specification Tip for Design Professionals:

DualProof T Membrane may be specified by name or by using the following description: a propriety 1.7mm PVC composite waterproofing membrane, consisting of a special non-woven PP-Fleece, which is co-extruded with a flexible transparent PVC Sheet. The fresh concrete forms a mechanical bond with the PP-Fleece and prevents water from tracking between the membrane and the concrete. The system is especially designed for the waterproofing and the protection of below ground reinforced concrete structures.

- ✓ DualProof T Membrane forms a permanent mechanical bond with the fresh concrete and prevents tracking of water between the membrane and the concrete.
- ✓ When used in double-sided formwork, the cured concrete will be visible through the installed membrane, this allows remedial works of the concrete be undertaken prior to backfilling if required.
- ✓ Provides all Grades of Protection according to BS 8102: 2009
- ✓ DualProof T Membrane is Pre-applied
- ✓ May be installed in all weather conditions
- ✓ Fast and easy to install
- ✓ No requirements for complicated welding equipment
- ✓ Lightweight and versatile-Easy on-site handling
- ✓ Protects concrete against salt and sulphate attack
- ✓ Unaffected by ground settlement
- ✓ May be used in salt-water conditions
- ✓ *Offers protection against Radon in accordance with BS 8485: 2015
- ✓ Several independent test-reports
- ✓ Designed and manufactured in Germany



SURFASOLOGY

E: info@surfalogy.com

T: 01 832 1005

W: surfalogy.ie



How does DualProof T Membrane work:

When the fresh concrete is placed, it achieves a complete mechanical bond with the unique PP-Fleece and prevents any water movement between the concrete and the membrane.

How do I prepare the surface prior to application of The DualProof T Membrane :

All surfaces onto which the DualProof T Membrane is to be applied should be sound, solid and free sharp objects and gaps or voids that are greater than 12mm. All corners, up-stands, pipe/service penetrations etc. must be detailed correctly (please consult our Technical Department for further advice) prior to the application of the membrane.



Note: DualProof T Membrane is designed for use with structural reinforced concrete. The concrete should be designed by a Structural Engineer to EN 1992. Please ensure that the concrete is placed and cured correctly, and that all non-movement construction joints are detailed with CEMflex Active Waterstop. Please consult our Technical Department for advice on the detailing Movement Joints and Non-Movement Joints.

Pre-Application under-slab

DualProof T Membrane should be placed onto the properly prepared substrate, with the PP-Fleece facing towards the concrete which is to be waterproofed. The edges of the membrane should be overlapped by a minimum of 50 mm and the ends of the rolls staggered by a minimum of 300mm. All overlaps should be sealed using DualProof MS Polymer Adhesive, or by using suitable heat-welding equipment.

SURFASOLOGY

E: info@surfasology.com

T: 01 832 1005

W: surfasology.ie



The installed membrane should be inspected for damages prior to the placement of the concrete. In the unlikely event of damage occurring to the membrane, repairs may be completed by simply placing a patch of membrane over the damaged area and bonding with DualProof MS Polymer Adhesive.

The installed membrane may be cleaned using a soft -brush , an oil-free air system or a low-pressure system using cold water if required. All standing water or any construction debris must be removed from the membrane prior to placing the concrete.

Note: All detailing such as overlaps, non-movement construction joints, movement joints, tie-holes, ground anchors, pipe penetrations etc, must be completed as per the method statement provided.

How do I install DualProof T Membrane inside the formwork:

- The Formwork should be flat, clean and free from voids that are >12mm.
- Using a sharp blade cut the membrane into lengths that are 50mm longer than the full height of the formwork.
- Place the membrane with the fleece side facing towards the concrete to be waterproofed.
- The membrane should be placed with the surplus 50mm hanging over the top of the formwork, and secured with a timber batten to the top of the back of the formwork.
- It is important that the membrane is placed flat against the formwork, if required small wire staples may be placed at 500mm centres with a distance of 20mm in from the edge of the membrane.
- Using a clean dry cloth wipe the clear edge of the installed membrane, place the next length of membrane in the same manner, ensuring that the edge overlaps and the clear edge of the previously applied membrane is covered with "fleece".
- Place a bead of DualProof Adhesive over the clean clear edge, and compress the overlap using a wooden roller. Alternatively, a heat-welding system may be used to seal the overlaps.
- In advance of pouring the concrete inspect the membrane for damages.
- Remove the formwork when the concrete has achieved a minimum strength of >10Nmm².
- **Note:** All detailing such as overlaps, non-movement construction joints, movement joints, tie-holes, ground anchors, pipe penetrations etc, must be completed as per the method statement provided.

Backfilling:

- It is advisable to install a protection board such as SURFASDRAIN over the installed DualProof T Membrane prior to backfilling.
- Backfill should be clean filling and free from sharp objects or construction debris.
- Do not use stones or filling that are larger than 50mm.
- Backfill should be compacted every 300mm as defined by ASTM 1557.
- For further information please contact our Technical Department.

SURFASOLOGY

E: info@surfalogy.com

T: 01 832 1005

W: surfalogy.ie



Storage:

- DualProof T Membrane should be stored off the ground in its original manufacturers packaging in dry conditions above 5°C.

Test Results:

- CE Marking DIN EN 13967
- German DIN 18195 Standard
- German DIN V 20000-202 approved
- DIN V 20000-202 approved
- General German Test Report PG-ÜBB / abP
- CPR Certificate (the Construction Products Regulation) -EN 13967:2004 + A1:2006

*"The membrane is independently tested and approved for use as a barrier against Radon Gas. In applications where methane or CO₂ resistance is required Dualproof T Membrane will act as barrier, against these ground gases, when installed in accordance with BRE Report 414 the membrane will be compliant with the recommendations made in CIRIA C665 : 2007 Assessing risks posed by hazardous ground gases to building, BS 8485 : 2015, BREReports211 & 212 and NHBC Standards. Guidance is given in the Ground Gas Handbook, 2009 and the manufacturer's technical literature."

Please protect the environment: Dispose of waste in accordance with the local authority regulations.

Disclaimer: The general information provided in the present technical description, application guidelines and other recommendations, is based on research and experience. However, the client is obliged to determine themselves what products are suitable for use. Accordingly, no liability will be accepted by IBC Limited t/a SURFASOLOGY™.

For further information contact the SURFASOLOGY™ Technical Department.

SURFASOLOGY

E: info@surfalogy.com

T: 01 832 1005

W: surfalogy.ie





Smart Surface Solutions

Waterproofing and Damp Proofing Specialists

WHO WE ARE

SURFASOLOGY, formerly IBC Ltd., is Ireland's leading waterproofing and damp proofing specialist that has been proudly providing market leading, innovative, and sustainable construction solutions since 1976.

Our high-quality products and systems are accompanied by our professional technical support and a full installation service. **SURFASOLOGY** technical consultancy team have unrivalled experience in major construction projects, as well as solving everyday problems for homeowners, with long term trustworthy solutions.

Our products are all manufactured in ISO Quality System compliant facilities and meet the relevant local, National, & European standards. **SURFASOLOGY** network members manufacture products exclusively in Germany, Switzerland, Spain, Greece and the UK. We support these products in local markets with highly-qualified technical professionals, who understand both on-site demands and the design detail. We work in a collaborative way with our clients at all stages of the project to ensure that the correct design, preparation, and application are carried out to ensure a timely and successful outcome for all stakeholders.

Get in touch with us today!

**INNOVATIVE, WORLD-CLASS,
SUSTAINABLE CONSTRUCTION
SOLUTIONS, POWERED BY OUR
EXTENSIVE EXPERIENCE AND
EXPERTISE.**

AREAS OF EXPERTISE

Structural Waterproofing

Our world class solutions encompass the whole building envelope both above and below ground.

Damp Proofing & Remedial

A comprehensive range of first class damp proofing and timber treatment solutions.

Specialist Screeds & Coatings

High quality floor finish on domestic, commercial, under-floor heating or industrial projects.

Concrete Repair

We offer a highly efficient selection of products for the repair and protection of concrete elements.

WHAT WE DO

Material Supply

Reliable and sustainable surface solutions accompanied by unrivalled technical support.

Installation Service

Specialised installation service provided by our approved contractors delivering high quality workmanship you can trust.

Technical Support

Extensive experience and expertise in Project Design and Technical Support Services ensuring reliable outcomes for all our clients.

CPD Seminars

RIAI and RIBA approved CPD Seminars to specifiers on a variety of topics covering structural waterproofing and damp proofing.

SURFASOLOGY

Unit 143, Grange Drive,
Baldoyle Industrial Estate,
Dublin 13, D13 W9V2,
Ireland

E: info@surfalogy.com

T: 01 832 1005

W: surfalogy.ie

